

**FLUKE®**

# **MET/TEMP**

Metrology Software

## Users Manual



# Table of Contents

Title	Page
Introduction .....	1
Section 1: Product Overview .....	1
Features Available in Standalone and MET/BASE Versions .....	1
Features Available Only When Bundled With MET/BASE .....	2
System Requirements .....	2
Section 2: Installation .....	2
Installation as a Standalone .....	2
Installation as an Accessory to MET/CAL .....	2
Section 3: Hardware Setup .....	3
Section 4: Temperature Setup.....	4
Section 5: UUT Setup.....	5
Section 6: Performing Calibrations .....	6
Other Calibration Functions .....	7
Section 7: Post-Calibration Procedures .....	7
Post Run in MET/BASE Database.....	7
Post Run in the Standalone Version .....	7
Section 8: Backup for MET/TEMP Software.....	7
Section 9: Contacting MET/SUPPORT .....	8
About the MET/SUPPORT Program .....	8
Telephone Support .....	8
Mail, FAX, E-Mail and World Wide Web.....	8
Before Calling Technical Support.....	8
Please Have the Following Information Available .....	8
International Support.....	9



# **MET/TEMP**

## **Metrology Software**

### **Introduction**

This manual describes the installation and use of MET/TEMP Software. It is designed to serve two groups of users:

- Those who are familiar with and use MET/BASE products for data storage.
- Those who want to produce data output as a CSV (comma separated value) file.

If you currently use MET/BASE products, the *Metrology Software Users Manual* and the *Metrology Software Installation and Upgrade Guide* are valuable resources as well.

This manual is divided into sections. Each section contains important information to help you understand and use MET/TEMP Software successfully.

### **Section 1: Product Overview**

MET/TEMP Software provides a PC Windows-based Graphic User Interface (GUI) and controller to allow you to calibrate multiple thermocouples or thermal switches at one time, using the Hydra Series II Data Bucket and Fluke 500 Series Dry-Block Temperature calibrators.

MET/TEMP software can be used as a standalone program, with data downloaded into CSV (comma separated value) file, or with MET/BASE software with data stored in an SQL database.

#### **Features Available in Standalone and MET/BASE Versions**

With either version of MET/TEMP Software, standalone or with MET/BASE, you can:

- Calibrate up to 20 thermocouples or thermal switches simultaneously.
- Store calibration results to a CSV file that can be read by most data viewers.
- Select one of the following temperature reference standards:
  - a. Precision PRT / SPRT attached to two or four of the Hydra's 20 channels.
  - b. Temperature sensors intrinsic to the Fluke 500 Series Dry-Block Temperature calibrators.
- Conduct a full range of automated tests and save calibration data.
- Logically account for ramp and soak times.
- Automatically set up an appropriate temperature schedule for thermal switches.
- Provide visual feedback to the operator on the current status of a test.
- Select a schedule of 1 to 15 discreet temperatures.
- Store a schedule of temperatures, Hydra setup, and asset list to reduce setup time during future procedures.

### **Features Available Only When Bundled With MET/BASE**

- Output data directly to the MET/BASE database
- Verify that the selected reference standard exists and is in calibration.
- Add new UUT assets on the fly.
- Print certificates and result reports
- Prompt for required data

### **System Requirements**

Fluke Metrology Software runs on a variety of platforms. However, the main text of this manual describes only installation on machines running Microsoft Windows 95, Windows 98, Windows NT and Windows 2000.

The minimum requirements for a standalone workstation installation are as follows:

- IBM PC or compatible with at least a Pentium 133 Mhz microprocessor
- VGA monitor
- 64 megabytes of RAM (128 recommended)
- 80 megabytes available on the hard drive
- Windows 95 or later
- Two COMM (serial) ports

## **Section 2: Installation**

You can install MET/TEMP Software as standalone software with data saved to a CSV file, or as an accessory to MET/BASE software, with data saved to the MET/BASE database.

### **Installation as a Standalone**

1. If you are installing MET/TEMP Software to run as a standalone system (without MET/BASE), simply insert the provided CD. If your system does not automatically start the install process, browse to your CD drive and double-click the **setup.exe** file.
2. As the install proceeds, allow the software to install to the defaults provided unless you have a compelling reason for not doing so.
3. Apply MET/TEMP license disk.

### **Installation as an Accessory to MET/CAL**

Until MET/TEMP Software is integrated with MET/BASE, follow these steps:

1. Install MET/BASE, following the instructions in the *Fluke Metrology Software Installation and Upgrade Guide*.
2. Install MET/TEMP Software files into the shared MET/CAL directory on the server from the CD.
3. Install MET/TEMP Software files into the shared MET/CAL directory on clients by running setup from the \metcal\client directory on the server, as described in the *Metrology Software Installation and Upgrade Guide*.
4. Apply the MET/BASE license disk, following the instructions in the *Fluke Metrology Software Installation and Upgrade Guide*.

## **Section 3: Hardware Setup**

Open MET/TEMP Software. The main dialog appears.

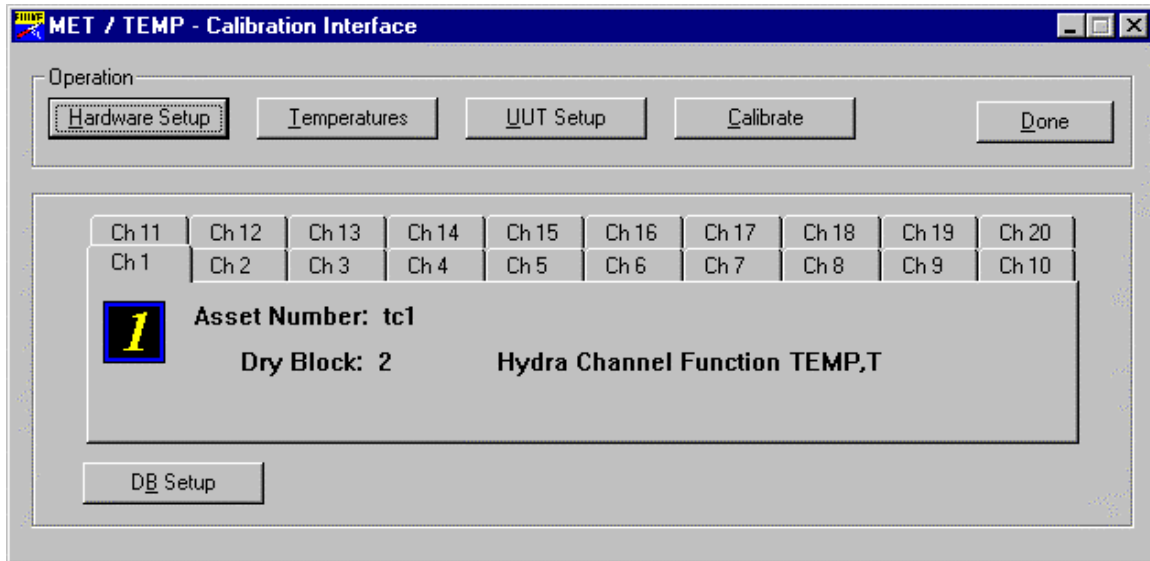


Figure 1. Main Dialog

afp01s.bmp

1. Select **DB Setup**. Enable or disable database mode. Enable will only work if you have MET/BASE installed.
2. Select the **Hardware Setup** feature. The following setup dialog appears:

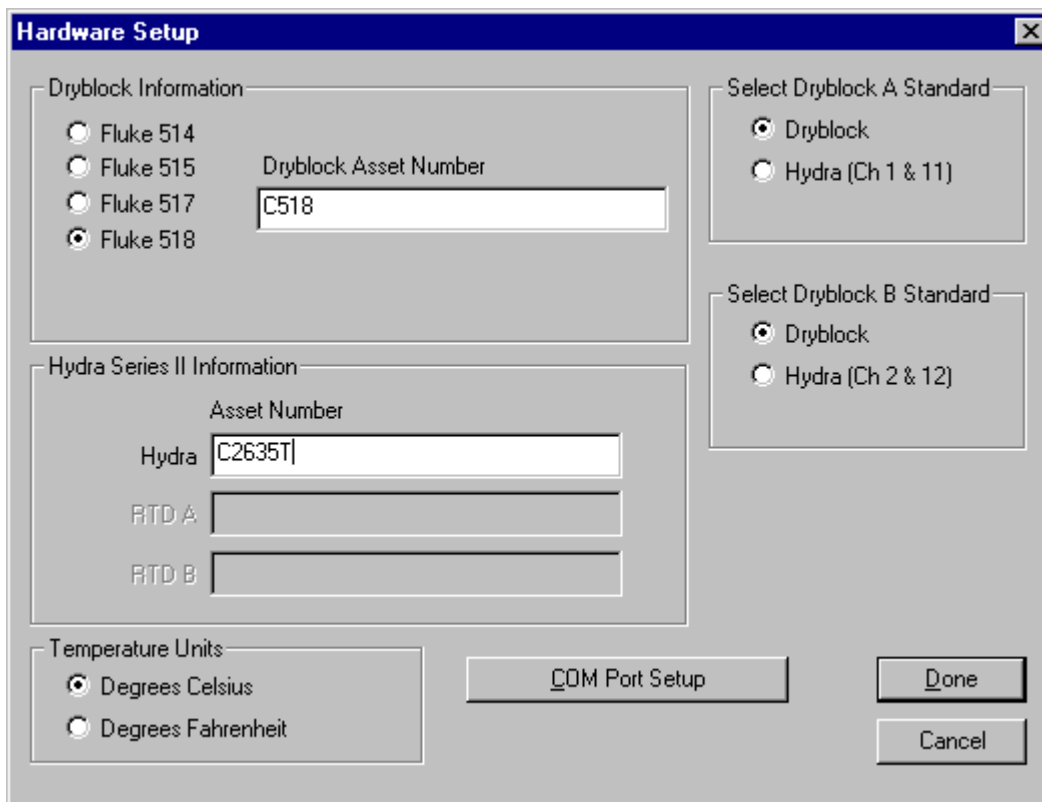


Figure 2. Setup Dialog

afp02s.bmp

- a. Enter the Dry-Block you are using and enter the asset number.
- b. Enter the Hydra Series II asset number.

- c. Select whether the reference standard is Dry-Block or Hydra PRT / SPRT.
3. From the setup dialog box, select **COMM Port Setup**. At the following dialog box, indicate which ports to use with the Dry-Block and the Hydra.

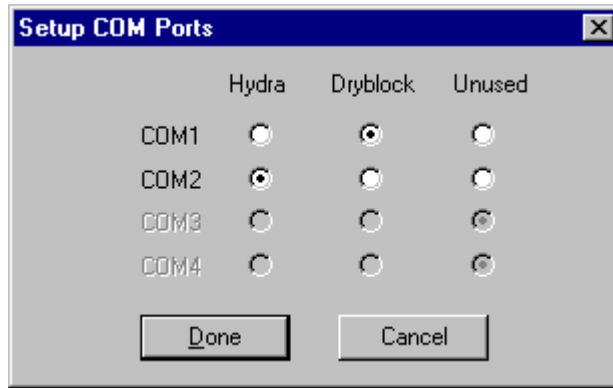


Figure 3. Set Up COMM Ports

afp03s.bmp

4. Click **OK**.

### Section 4: Temperature Setup

From the main dialog, select **Temperatures**. The following dialog appears:

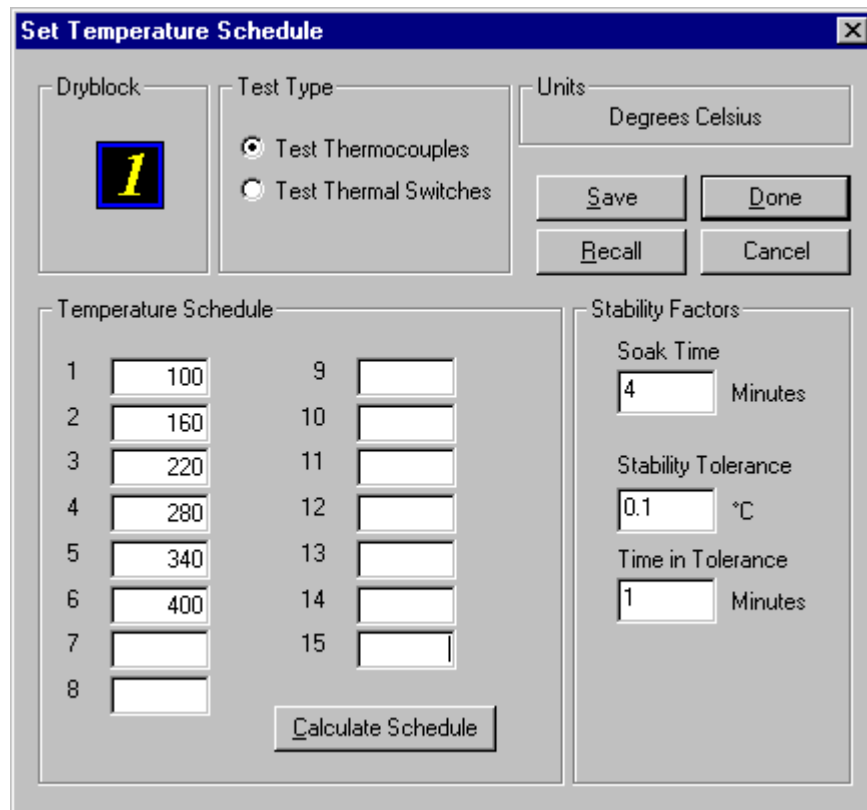


Figure 4. Set Temperature Schedule

afp04s.bmp

1. Under Test Type, select **Test Thermocouples** or **Test Thermal Switches**.



2. To test thermocouples, enter the temperature test point schedule. You can have this calculated automatically by entering your low- and high-range figures and selecting **Calculate Schedule**.
3. To test thermal switches, enter setpoint and upper and lower tolerances. You can have this calculated automatically by entering your low- and high-range figures and selecting **Calculate Schedule**.

The screenshot shows the 'Set Temperature Schedule' dialog box. It has a title bar with a close button. The dialog is organized into several sections:

- Dryblock:** Contains a yellow 'A' icon.
- Test Type:** Two radio buttons: 'Test Thermocouples' (unselected) and 'Test Thermal Switches' (selected).
- Units:** A dropdown menu set to 'Degrees Fahrenheit'.
- Buttons:** 'Save', 'Done', 'Recall', and 'Cancel' are located at the top right.
- Setpoints:** Includes a 'Setpoint' field with '99', 'Tolerance' fields for '+' (2) and '-' (2), and a 'Reset' field with '99'. A 'Calculate Schedule' button is at the bottom left.
- Temperature Schedule:** A list of 9 points with values: 1: 93, 2: 95, 3: 97, 4: 101, 5: 105, 6: 103, 7: 101, 8: 97, 9: 93.
- Stability Factors:** Includes 'Soak Time' (2 Minutes), 'Stability Tolerance' (0.1 °F), 'Time in Tolerance' (1 Minutes), and 'Scan Rate' (0.8 Deg/min).

Figure 5. Set Thermal Switch Schedule

afp08s.bmp

4. Once your temperature schedule is set, select **Done**.

You may also recall old temperature schedules that you have saved using the **Recall** button, or save the current settings using the **Save** button if you plan to use the same temperature schedule in the future.

## Section 5: UUT Setup

If the UUT or standard is already entered in your MET/BASE database, the prompts are similar to those described in the previous section for the standalone version.

From the main dialog box:

1. Select UUT setup.
2. Select the channels you are using.
3. Select the appropriate Hydra function for each channel.
4. Select **Edit Asset List**.
5. Select **Channel In Use**.
6. Enter the asset number of the UUT to be calibrated on this channel.

7. Select the next appropriate channel number and repeat steps 2 and 3.

If the UUT is not a current asset in the database, the software prompts you to enter data for each required field in the inventory record of the database. Prompts also direct you to enter required data for the calibration table in order to save the completed calibration record.

## Section 6: Performing Calibrations

Once you have performed the input necessary to set up a calibration event, return to the main dialog and do the following:

1. From the main dialog, select **Calibrate**.
2. At the next screen, confirm your calibration setup.

*Note*

*You cannot make changes here. If an item is incorrect, select **Cancel** and make necessary changes in the main dialog.*

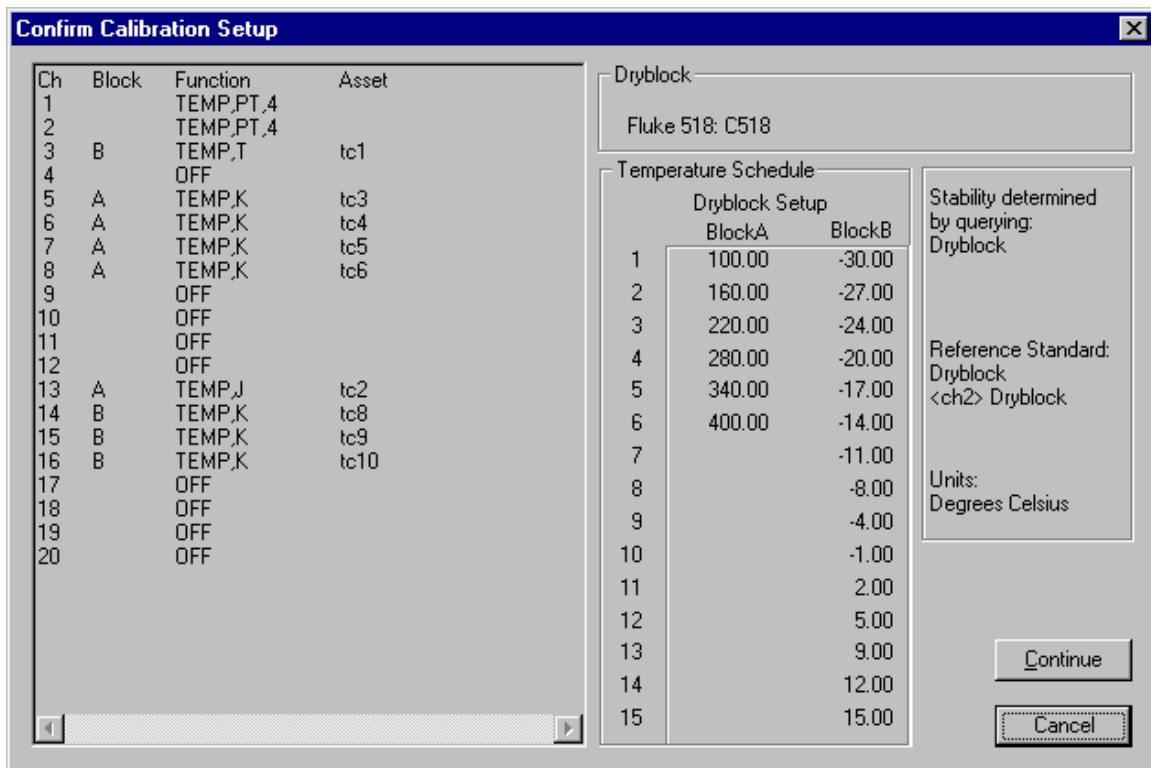


Figure 6. Confirm Calibration Setup

afp05s.bmp

If you wish to stop the calibration before it is complete, select **Interrupt Calibration** in the main dialog box.

During the calibration, a graph on the dialog displays the calibration event in progress. It only displays a scrolling window for up to 1 ½ hours of time.

### Other Calibration Functions

The **Save Settings** button allows you to save the Hydra set-up, switch schedule, or thermocouple schedule information to a file.

The **Recall Settings** button produces a dialog that allows you to recall previously saved asset data.

The **Clear Settings** button clears all the asset information from the current event

Use the **Done** button to close the application after the calibration is complete. This button is disabled while a calibration is in progress.

## Section 7: Post-Calibration Procedures

Once the calibration is complete, you have the option of saving the data. You can save data to a standard, comma-separated value file if you are running MET/TEMP Software as a standalone product, or a postrun dialog if you are in database mode.

### Post Run in MET/BASE Database

The post run dialog appears as follows. The UUT list is a multiple selection. The reports list is a single selection.

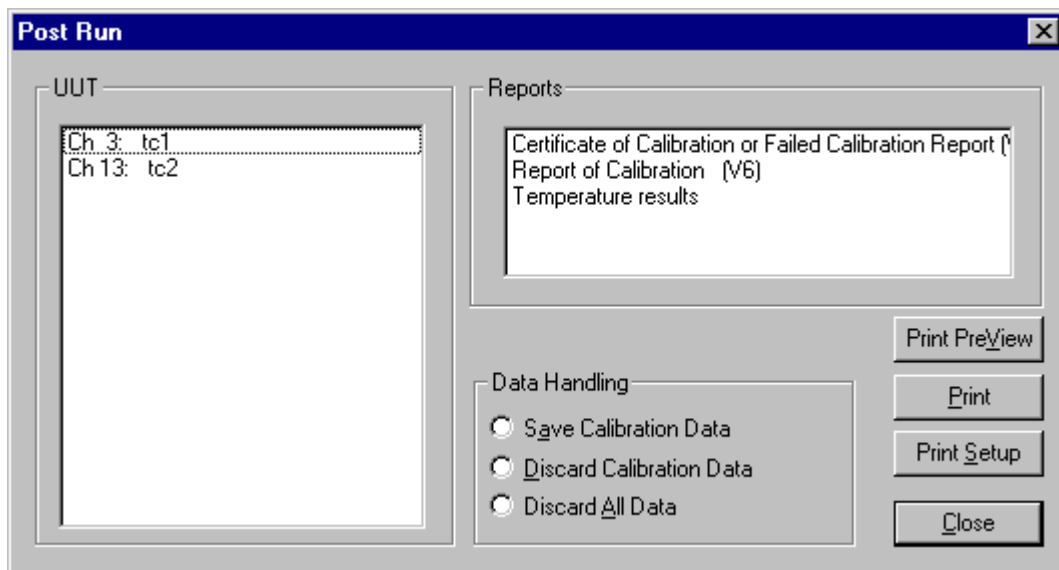


Figure 7. Post Run Dialog

### Post Run in the Standalone Version

In the standalone version of MET/TEMP Software, a standard file save dialog displays at the end of the temperature schedule execution.

## Section 8: Backup for MET/TEMP Software

For backup procedures, see Chapter 2 in the *Metrology Software Users Manual*.

## **Section 9: Contacting MET/SUPPORT**

### **About the MET/SUPPORT Program**

Fluke Metrology Software is supported by a highly skilled and conscientious team of professionals who are available to answer questions, help solve unique problems, and assist in troubleshooting in the event you run into difficulties.

### **Telephone Support**

Telephone support is available, but only to registered users of Fluke software. Be sure to register your software as soon as possible so you can make use of this service should the need arise.

Within the United States, toll free telephone support is available from 8:00 AM to 4:30 PM, Pacific Standard Time.

**Phone: 1-800-825-7411**

### **Mail, FAX, E-Mail and World Wide Web**

You may also contact us by mail, E-Mail, FAX, or by visiting the Fluke World Wide Web site.

FLUKE Corporation	<b>Phone</b>	1-425-446-5350
PO Box 9090	<b>FAX</b>	1-425-446-5992
Everett, WA 98206-9090	<b>E-Mail</b>	<a href="mailto:metsupport@fluke.com">metsupport@fluke.com</a>
Attention: MET/SUPPORT, MS 275G	<b>WWW</b>	<a href="http://www.fluke.com">http://www.fluke.com</a>

### **Before Calling Technical Support**

You may be able to discover the answer for yourself, so take the following steps before calling for support:

- Check the manual
- Check the MET/CAL online help
- Check the Fluke World Wide Web site

### **Please Have the Following Information Available**

If you do find it necessary to call for assistance, take a few moments to jot down some information. If this information is readily available, the support person can more quickly get to the exact details of the difficulty you are having, and will be able to resolve the issue more efficiently.

- Product name, applicable licenses, version and serial numbers
- Manual title, part number and version
- Operating system and version
- Network information if applicable
- List of steps necessary to recreate the problem
- Contents of autoexec.bat and config.sys files if applicable
- Version of Crystal Reports

**International Support**

For more information on international MET/SUPPORT™, please contact the Fluke office nearest you or your local representative.

<b>Location</b>	<b>Telephone</b>	<b>Fax</b>
Fluke Canada	905-890-7600	905-890-6866
Fluke China	86-10-6 512-3435	86-10-6 516-3437
Fluke Europe UK	44 1603 256625	44 1603 256688
Fluke Japan	81-3-3434-0181	81-3-3434-0170
Fluke Singapore	65-276-5565	65-738-9949

